



HOZBee

USER MANUAL

Content

Introduction	2
APP Installation	2
Start HOZBee	3
Receive and Transfer Data	4
Control Your System	5
Timer.....	9
Build up a New System.....	11
Password Change	11
Mesh Code Setting	12
Group Setting.....	13
Adding Device & Deleting Device	15
Scene Setting	17
Controller & Switch	19
Sensor	20
Data Backup & Restore	22
New Project	23
Other Commands	23
Appendix: Tutorial video	24

Introduction

HOZBee is an APP developed to simplify and accelerate the installation process of our smart lighting system. It also enables users to control the smart lighting system easily.

Based on Bluetooth Mesh technology, users can use their mobile device as an operation tool without any extra device. Of course, after set-up, there are more control devices that can be used to control your smart lighting system. Please refer to our brochure for more information.

The most unique point of HOZBee, compared to other APP in the market, is that no personal data such as email or phone number is required. This provides safer protection for your personal information security.

The interface is another advantage since we separate the user and the installer in the APP. As a user, the only thing you need to know from the APP is the current status of your system and the control method is intuitive. You can control your devices even without reading this manual.

As an installer, this manual tells you how to set up the smart lighting system, including basic operations such as adding devices, grouping, scene setting, scheduling, etc. Also you will know who to back up and restore the data in HOZBee from this manual.

If you are ready, let's start from downloading the APP.

APP Installation

HOZBee can be downloaded free of charge for Android OS and iOS. You can go searching "HOZBee" from Google Play or APP Market or directly scan the QR Code below to download it.

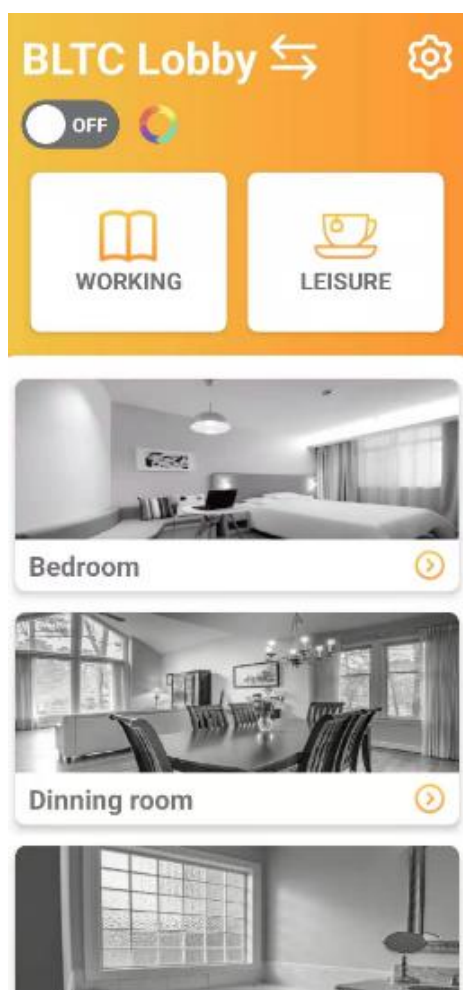


Start HOZBee

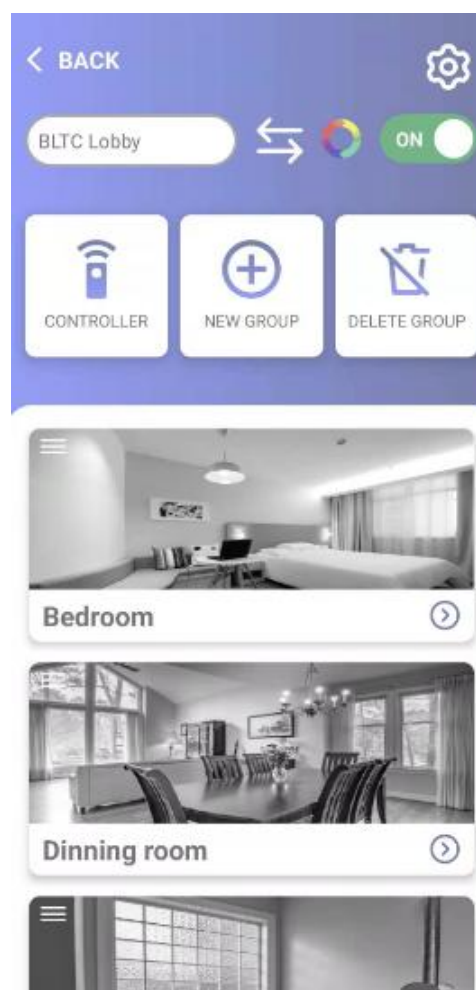
After HOZBee is installed and opened, you will not see any account information request, but the main page of your smart lighting project.

The page is empty before you build up your group and connect any device in your APP. To make your smart lighting world more abundant, there are 2 methods to start installation:

User



Installer



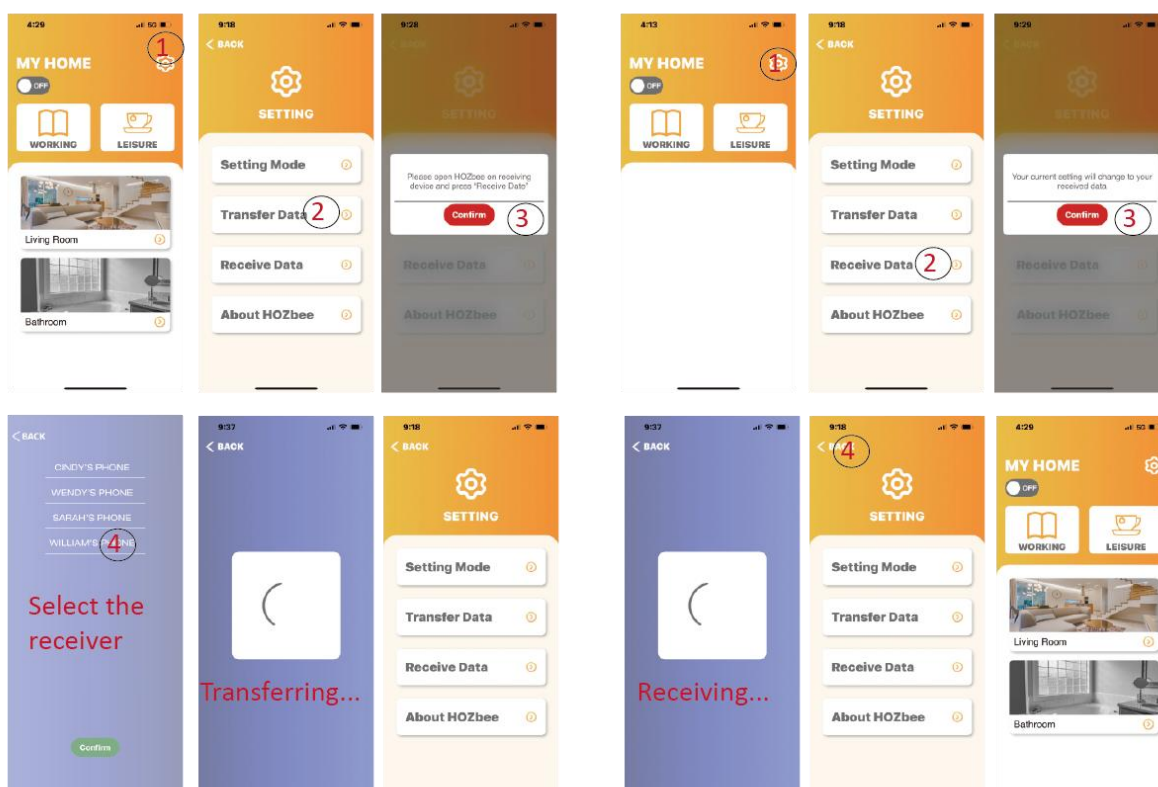
1. Receive existing data from other mobile, please check "Receive and Transfer Data".
2. Start to build up your own lighting system, please check "Build up a New System".

Receive and Transfer Data

If you only want to control the lighting system without considering somehow more complicate installation, the easiest way is to receive the existing data from other mobile. For example, the father can transfer the data to other family member after he sets up the system. The operation is quite simple and straight forward:

Sender

Receiver



After receiving data, receiver can now have the same setting in your mobile, and is able to start control.

Control Your System

Now you can start controlling your lighting system, here are some illustrations for the main page:



User Page




- ① Name Of Project
- ② Network: Create/delete/Create Network
- ③ Setting : Installer Mode / Data Share
- ④ On / Off
- ⑤ Color Changing: Hold for speed option
- ⑥ Preset Scene
- ⑦ On / Off Group
- ⑧ Into Control Page

1. Project name: You can name it in the setting mode. For the time being, please ignore it.
2. Switch: this is to control the whole system on or off. As long as there is one device turning on, the “on” status will be shown.
3. Preset Scenes control all your devices in the system. There are also independent scenes that can control the devices in group.
4. Group on/off: you can treat the group as the device union in your room, area, or any zone. Simply turn the group on or off by clicking the picture of each group.
5. Adjust the dimming level and colors of the whole group:



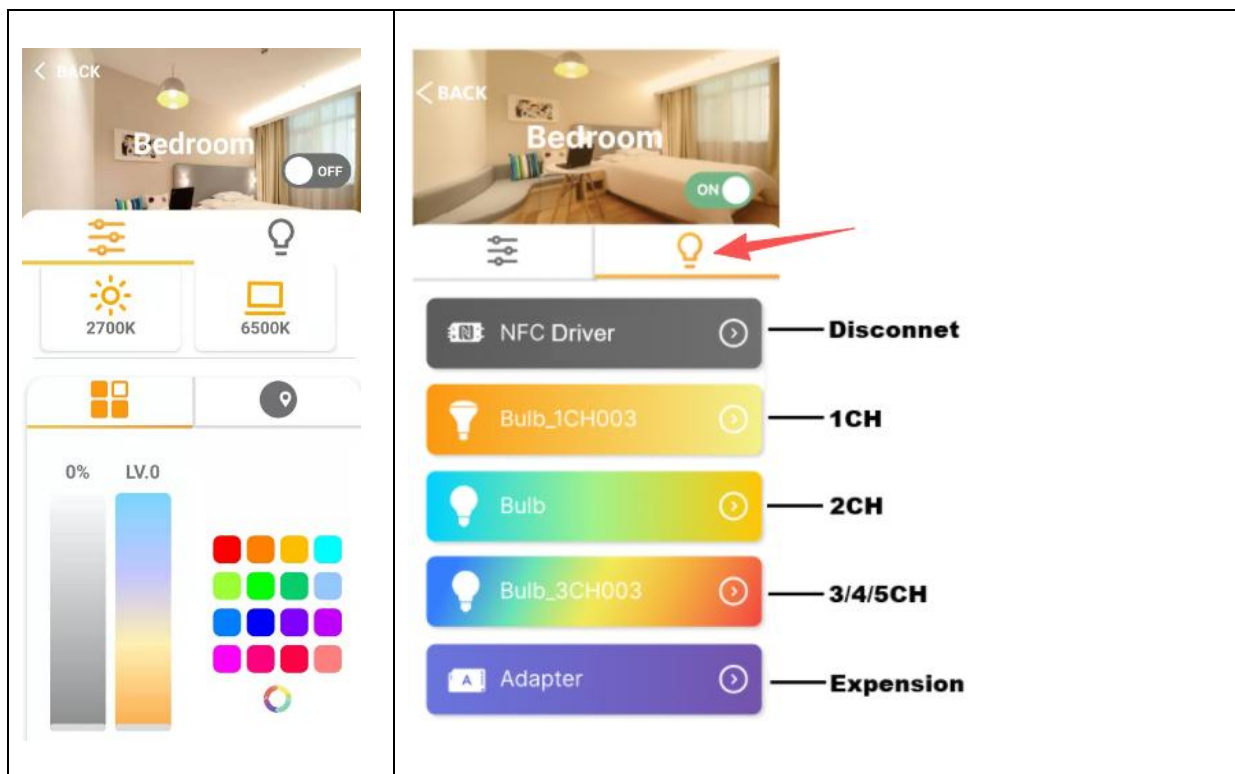
- ① All device On/Off
- ② Control Page
- ③ Device List
- ④ Scene
- ⑤ Color Bar control
- ⑥ Color Palette control
- ⑦ Dim level
- ⑧ Tunable White level
- ⑨ Sensor & Timer

If you enter the group, you will see the group control page above. Here you can adjust the performance of light by the following table:






Dimming Level	Tunable White	RGB Palette / Color
		
Upper for brighter, and minimal value is 0%.	Yellow and Blue bar for Warm and Cool white	Choose the color you like, then device will show chosen color light

Or you simply press the preset scene to enjoy the ambience you preferred.

6. You can go further to see how to control the single lights in the group:



There are 5 different types of control panels in the control area:

1CH		1 Color: Dimming only
2CH		2 Colors: Dimming + Tunable White
3CH		3 Colors: Dimming + RGB Control
4CH		4 Colors: Dimming + White + RGB Control
5CH		5 Colors: Dimming + Tunable White + RGB Control

The type of control panel follows the device. For example, for 2 CH or 2 colors A19, the 2CH color panel will be shown when you enter the control area of single device.

You can now adjust the color of each device as you wish. You don't need to save your adjustment. The device will keep the status until the scene is activated or you adjust again.

For now, you can treat your mobile device as a controller. Most of the operations you need to create your ambience are introduced. The next step is to set your own schedule for daily on/off automatically.

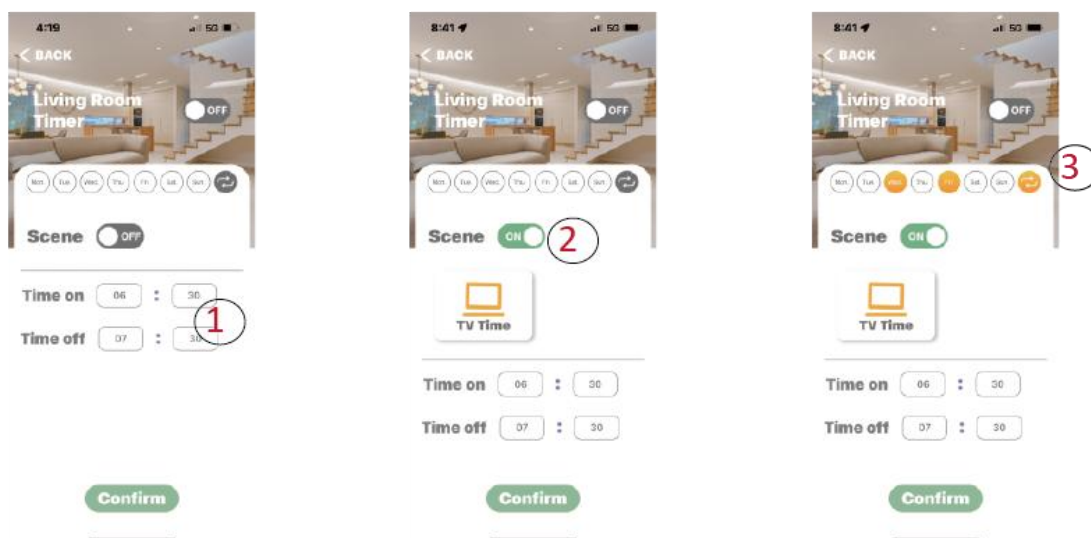
Timer

Timer is the only settable function for users in HOZBee. To enter Timer, please start from the Group page:



The timer controls the devices in the group. Therefore you only need to decide the following 3 conditions to initiate the timer:

1. Time to turn on/off the devices.
2. Scene selection if you want the devices to perform while turning on.
3. Repeated period if you want the schedule to be repeated during the weekdays.

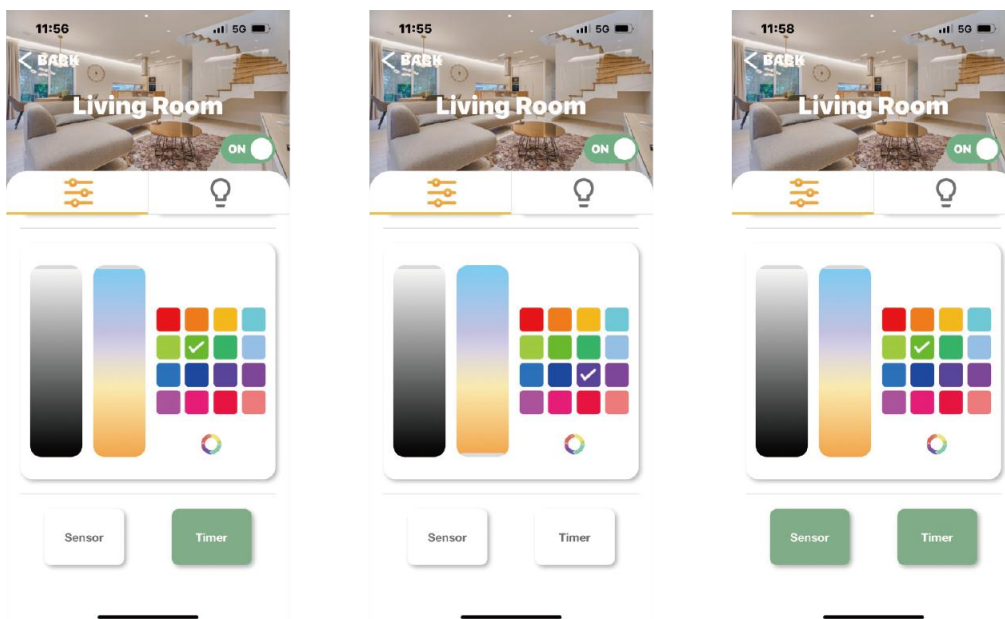


Once everything is set. Press confirm and APP will send the setting to the devices (The device blinks while receiving the setting), and then the device will automatically be turned on or off according to your setting.

The on/off control bar is prepare for the occasion when the automatically schedule change is not necessary. For example, you don't want the devices to be turned off at its preset time because there is a special event in your restaurant. You can simply disable it by switching the bar to the off status, and return it to on status while the event ends.



Sometimes the device will be controlled simultaneously by sensor and Timer. In such case, you may need to activate functions as below.

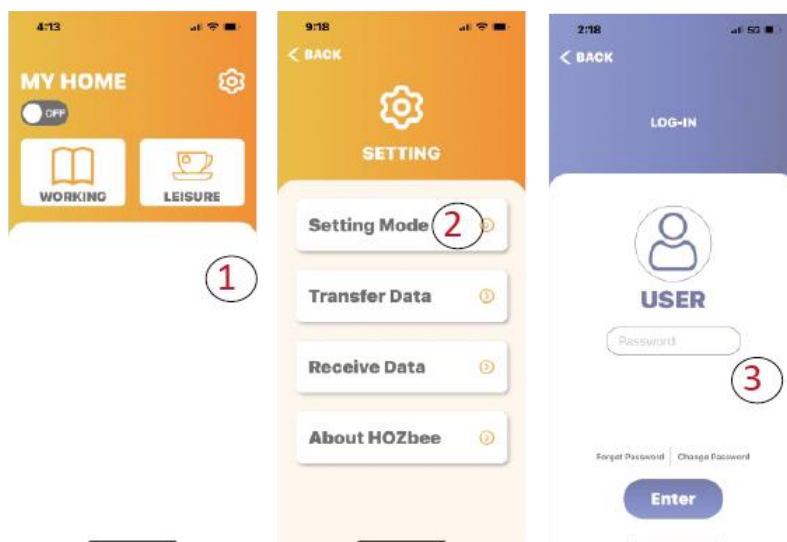


The activated function will be shown in green.

Build up a New System

As a first-time user or an installer, after all the devices are set up and with power on, you can start to build up your own network.

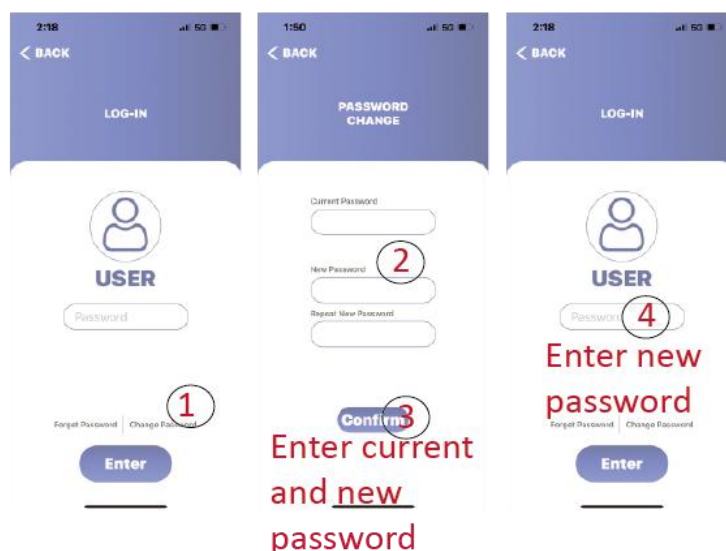
In order to protect the data and reduce confusion, the user and installer interfaces in HOZBee are separated. Therefore, as an installer, you need to enter the setting mode first:



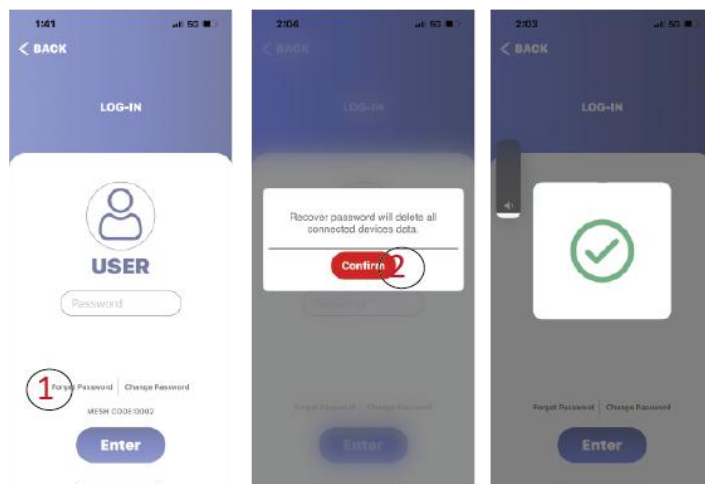
The default password is “0000”. If you don’t want other to change your setting data, you can change the password. The password will follow the data you send to others so the receiver cannot change your setting until you provide them your password.

Password Change

You can change the password by the following operations:



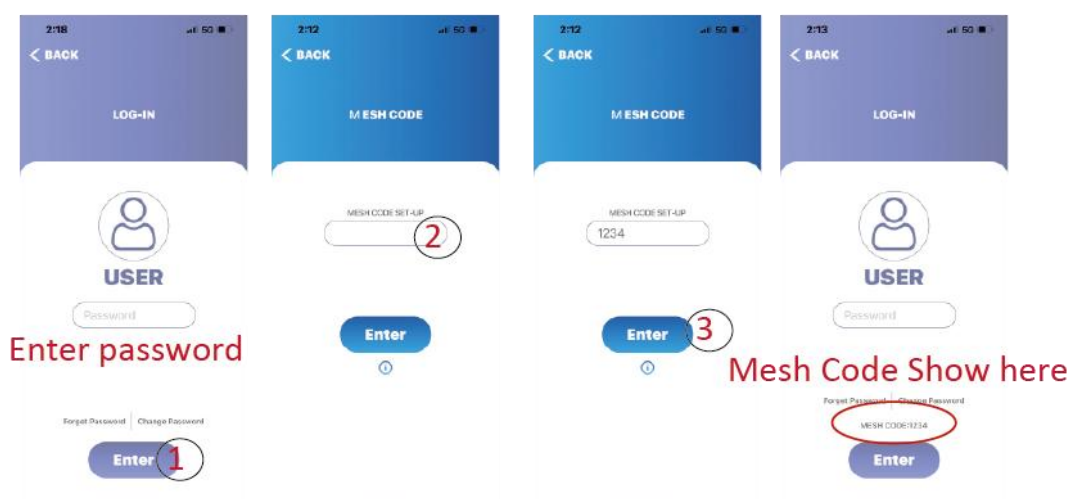
If you forget the password and want to retrieve to the default setting, please press command “Forget Password” as follows:



Beware that once you reset the password to the default one, all data set on your mobile device will be deleted. This is to protect your data not to be changed by someone to whom you share your system setting. HOZBee allows you to restore your data. Please refer to the section “Data Backup and Restore”.

Mesh Code Setting

When you enter the setting mode for the first time, HOZBee requires you input a mesh code. This is a four-digit number as a key index for your smart lighting system to prevent your devices from connecting by our other network. It’s up to your choice to decide a number from 0000 to 9999.

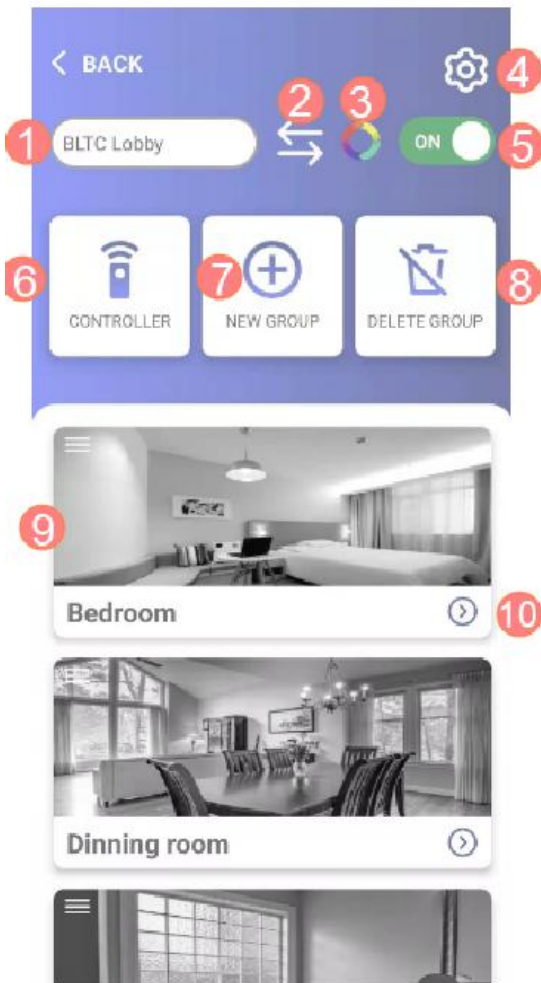


The Mesh Code will be shown on your log-in page once you set up. Mesh code is very important for data restore, please refer to “Data Backup and Restore” section. After Mesh Code is set, you can now start the journey of setting up your smart lighting network.

Group Setting

Group is the concept as the room in the house, the kitchen in the restaurant, the working area in the office, or fresh food zone in the supermarket. The easiest way to set the group is to follow the exact layout of your project.

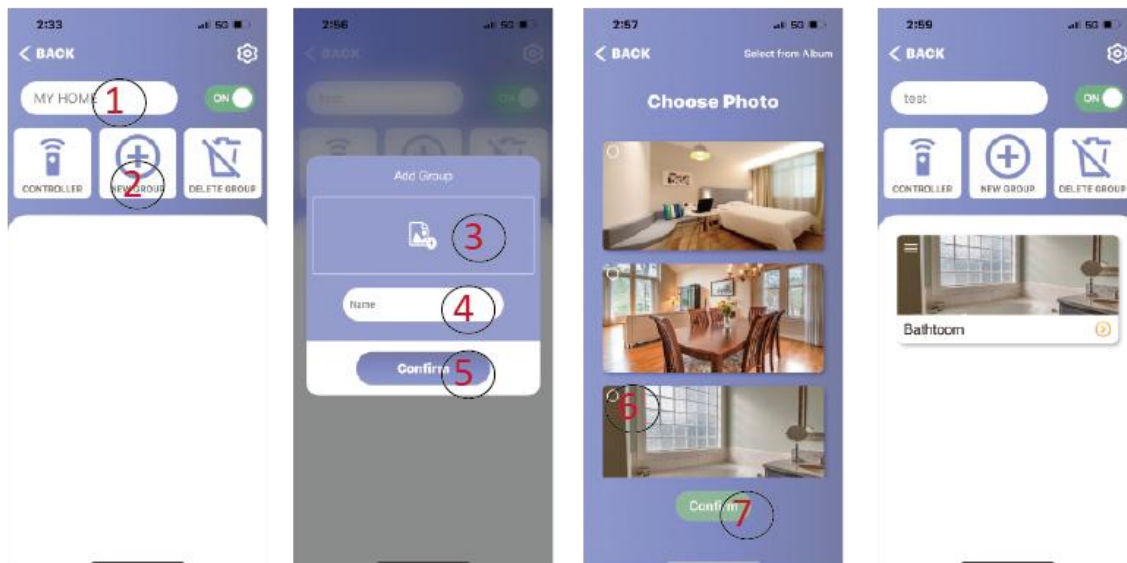
First you will see the setting home page here:



Installer Page

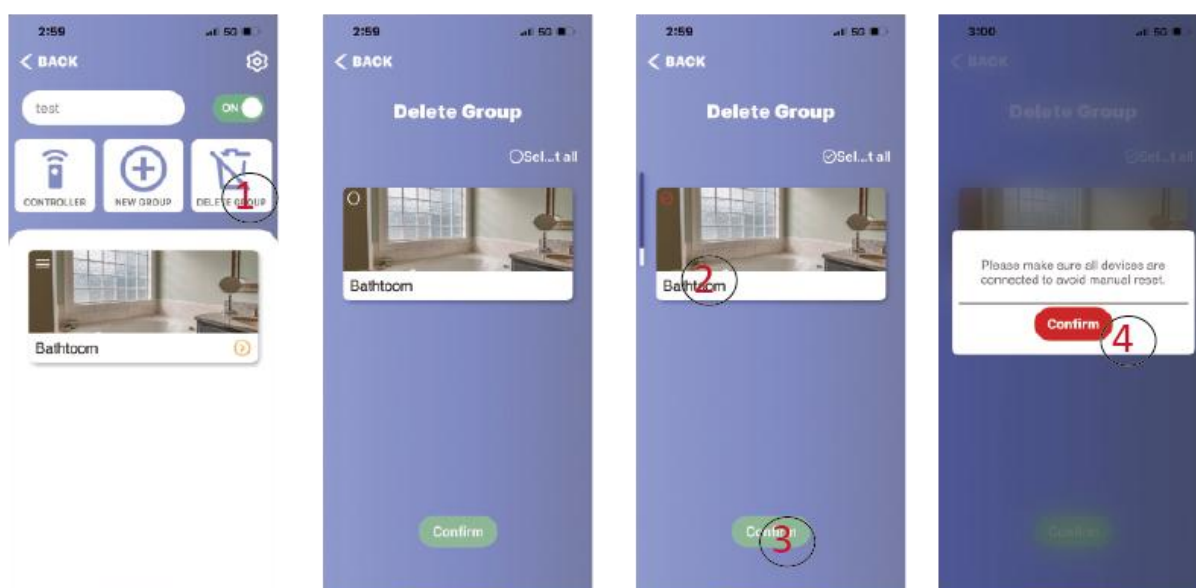
- ① Name of Project : Edit name
- ② Network : Create/delete/Create Network
- ③ Color Change: Hold for speed option
- ④ Setting : Backup / OTA / Share ... functions
- ⑤ On / Off : Turn all groups On/Off
- ⑥ Controller : Control all groups
- ⑦ NEW GROUP: Add group
- ⑧ Delete Group: Remove group
- ⑨ Group : On/Off Group
- ⑩ Control Page : Into color control page

1. You can change the name of your project by clicking the name. The default one is "MY HOME"
2. Press the NEW GROUP "+" icon, you can start to add group:



HOZBee needs you to select the photos in order to have good performance. You can select the photo that we suggest in the APP or collect them from your album. Your personal picture will be stored only in your device and will not be passed even when you send the setting data to others.

If you want to delete the group, click the trash can icon and select the group you want to delete:

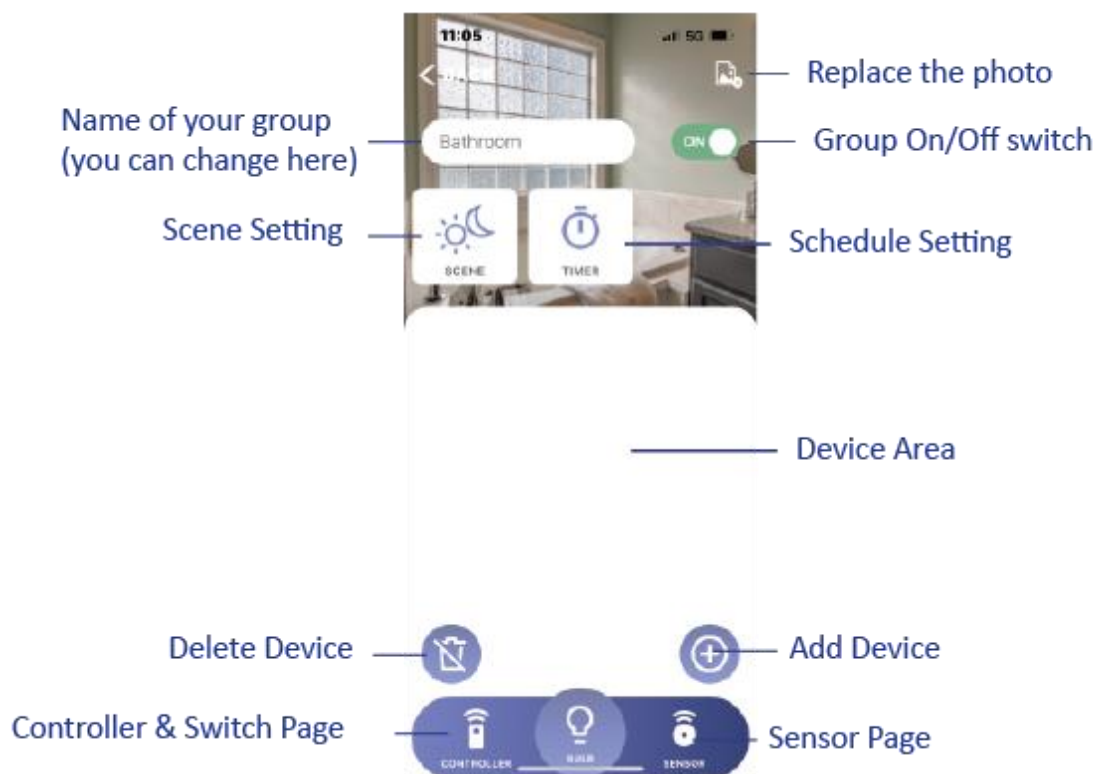


Beware that when the group is deleted, the devices that belong to the group will also be deleted. If you do this when the device is turned off, you may need to manual reset the device so that it could be connected again.

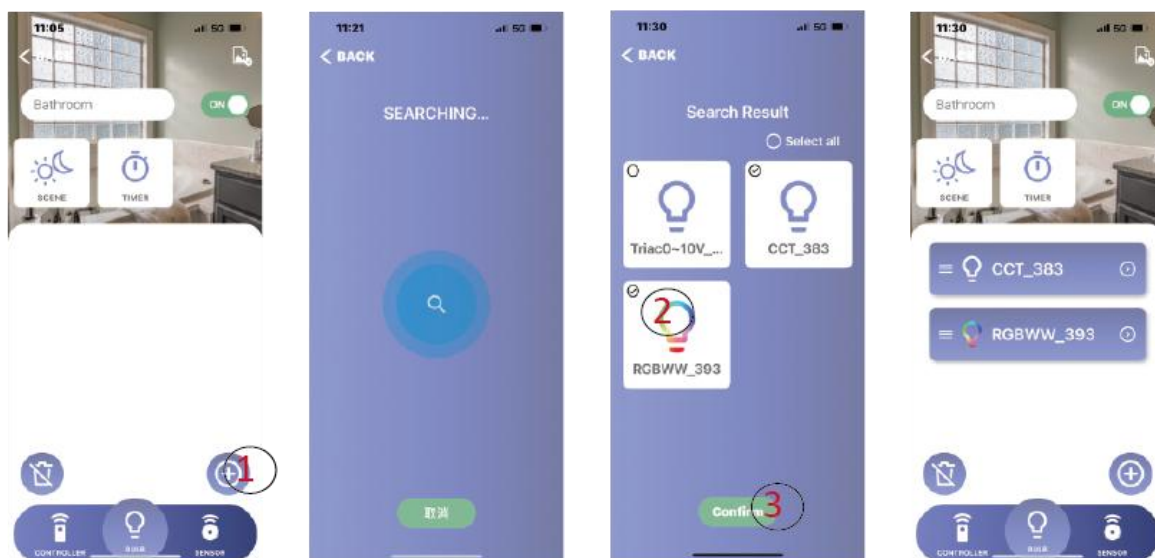
The next step is to add devices into your group.

Adding Device & Deleting Device

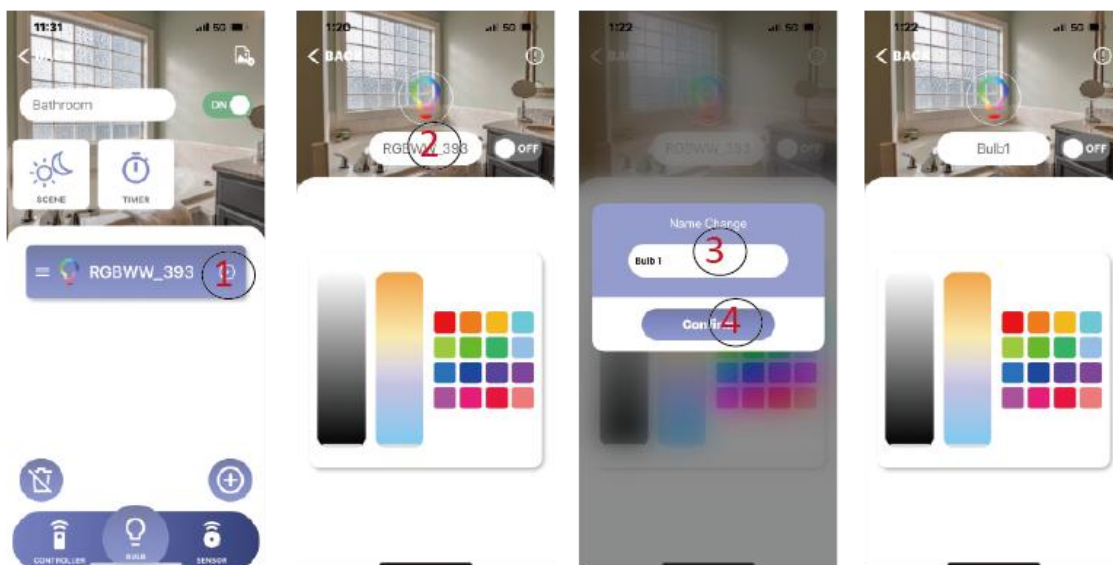
Once you finish the group setting, you can start to add devices into your system. The devices will be added based on group. Therefore please enter one group you already set up, and you will see the following group page:



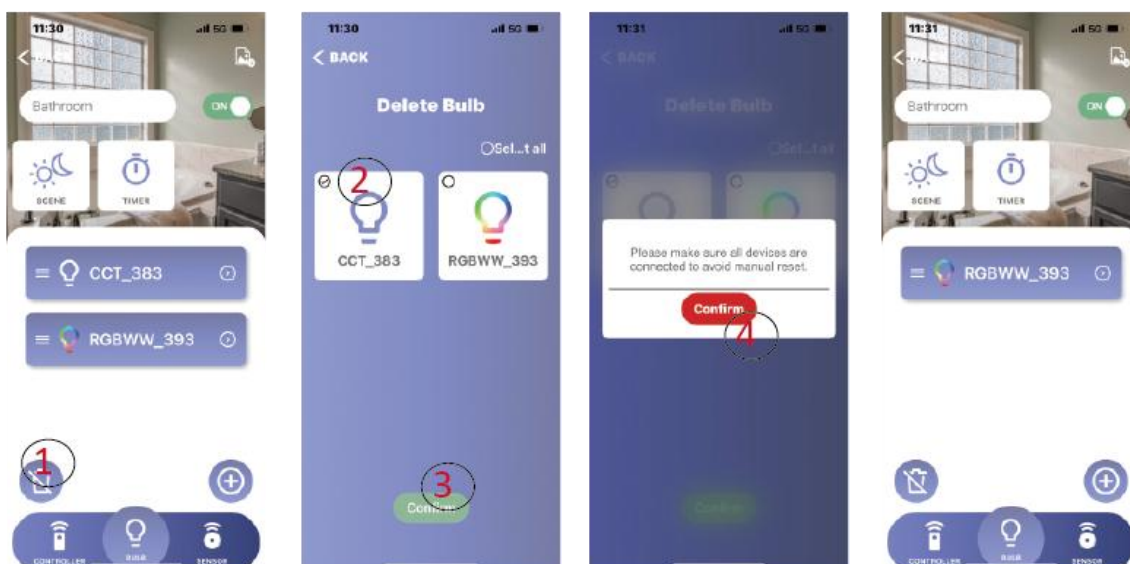
The first job is to add your devices:



You can rename your devices. This will help you recognize them easily.



For any reason, you want to remove the device from the group, please follow below procedures:



Now you can try to adjust the brightness, color temperature, or RGB color of your devices. The operations are the same as those in user mode. Please refer to previous section for more information.

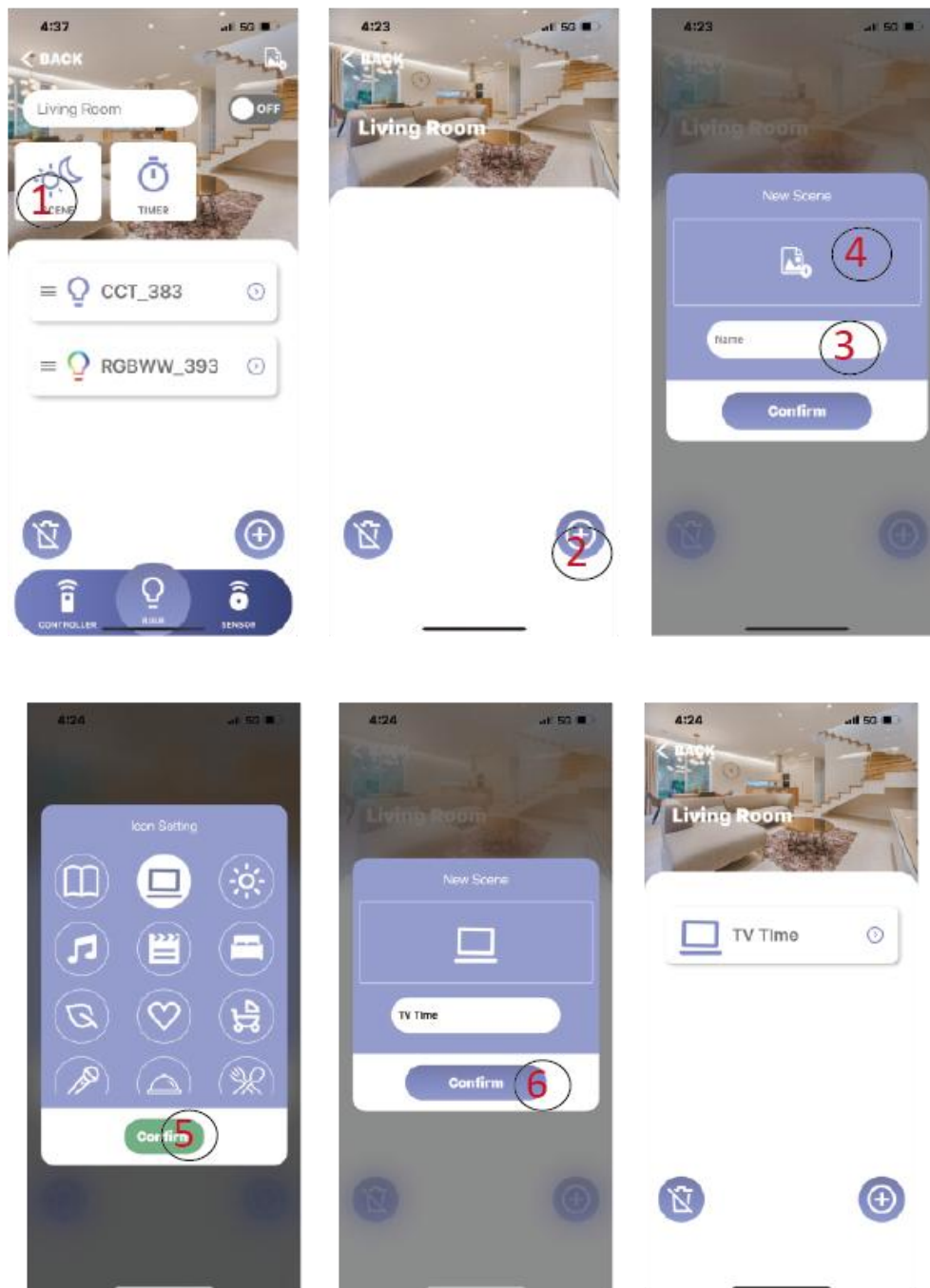
Some devices have particular working modes which needs to be chosen from the APP. This will be described on the data sheet or manual of the device. Please refer them for further information.

Now you can start to set up some advanced functions: scene and schedule

Scene Setting

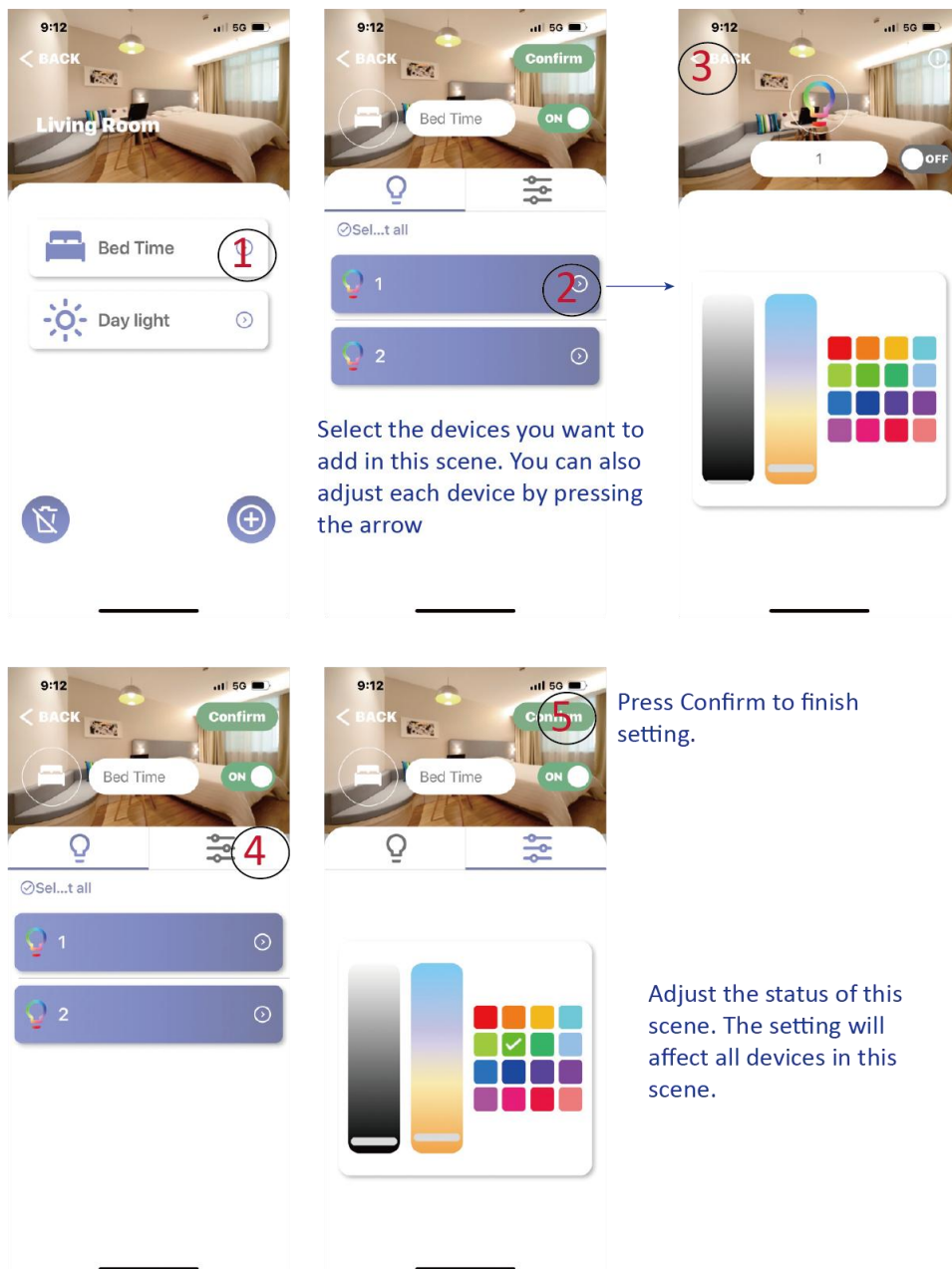
Scene is a preset combination of different dimming levels and colors of the devices in the group. After a scene is set, users could change ambience quickly in HOZBee by clicking the scene button. A scene could also upload to the controller so that users can change scene without APP.

First of all, you need to create new scenes:



Then you can set up the scene by the following steps:

1. Enter the scene setting page, the page is composed by two elements, one is the “Device list of the group” with the bulb icon. You can select the devices that the scene should include and adjust status here. (Step 1,2, and 3)
2. You can also adjust the dimming level, tunable white color, or RGB color of selected devices by entering the “Scene Status” as in Step 4.
3. When everything is set up, press “Confirm” button and then HOZBee will start the scene saving operations, and the selected devices will start to blink.
4. If you don’t want to save the scene setting, simply press “back” letter to go back to the scene list page.

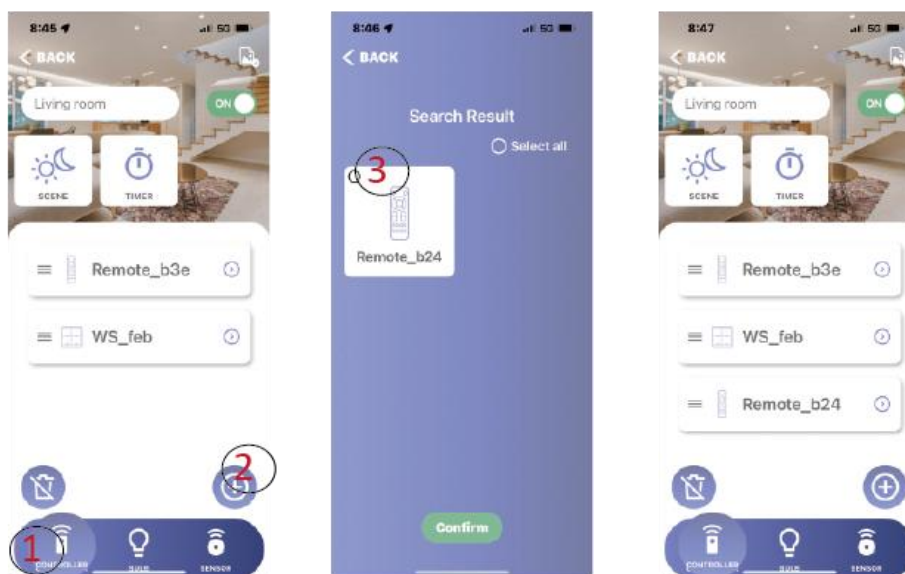


Controller & Switch

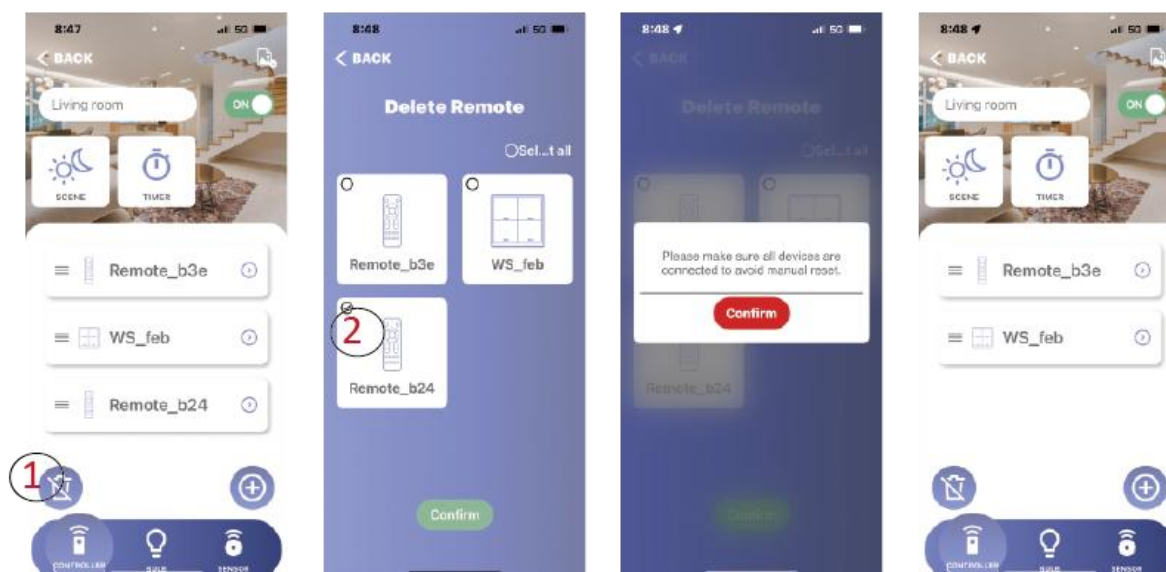
Controller and Switch are two particular devices in smart lighting system because they need APP for setting up. Once they are set, they don't need APP for further operations.

First of all, please wake up the controller and switch by long press the button following the instructions of the manual of each device. HOZBee APP also shows which button you should press.

Check the following step to add the controller into your system:



To remove the controller from your system, please follow the following steps:

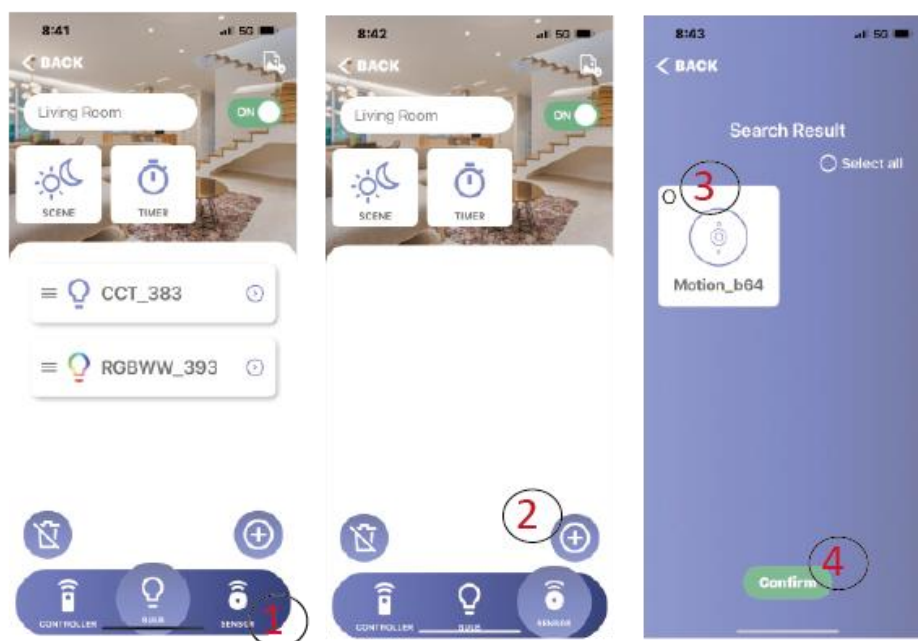


Once you add the controller or switch and keep the device awoken, you can start set up the device. Please follow the instructions from the manual of each device.

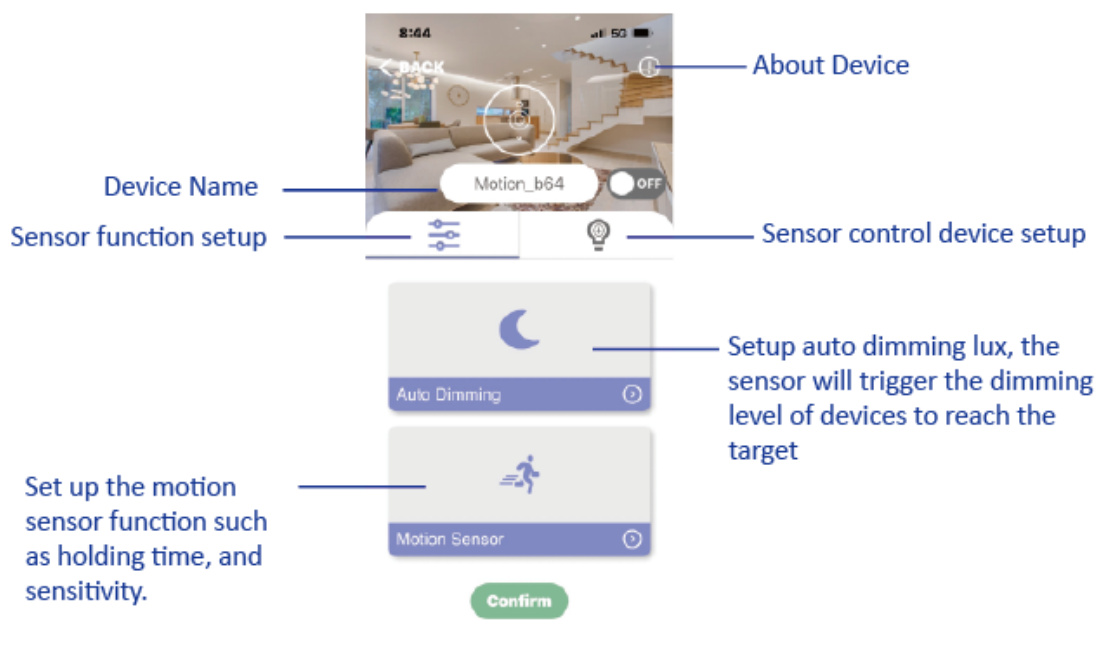
Sensor

Similar to Controller and Switch, Sensor performs so-called passive control function and also needs APP for setting up only. Once the sensor is set, it doesn't need APP for further operations.

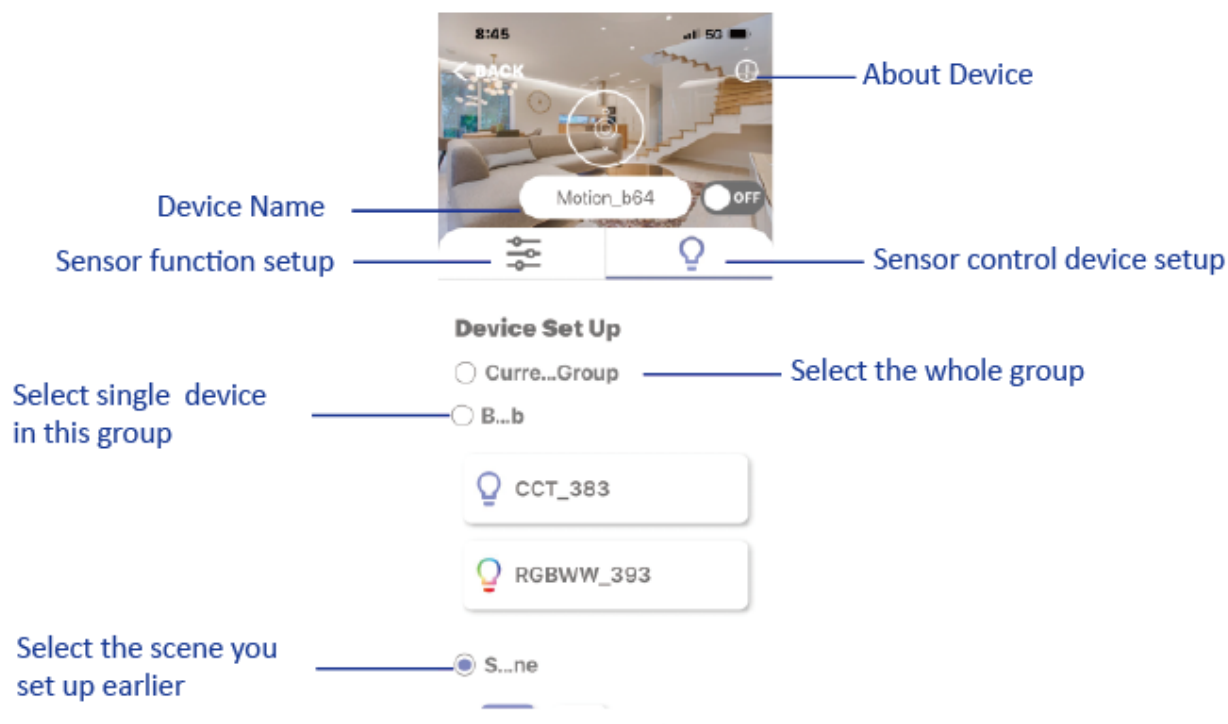
To start set up, you need to add the sensor into the system first:



After you select the sensor and add on to the system, you will enter the set-up page as below:



There are two subpages of sensor: one is to set up the sensor function as above. Click the bulb icon, you can enter the next page about grouping the devices:



The sensor is able to control all devices in the same group, single device in the same group, or the scene you just set up. The basic sensor function is to turn on the devices. The devices will remain the status before it was turned off last time. If you want to turn on the device in certain status (such as fix dimming level or CCT), you need to set up the scene first.

Different sensors may have different set-up procedure, please follow the datasheet of each sensor.

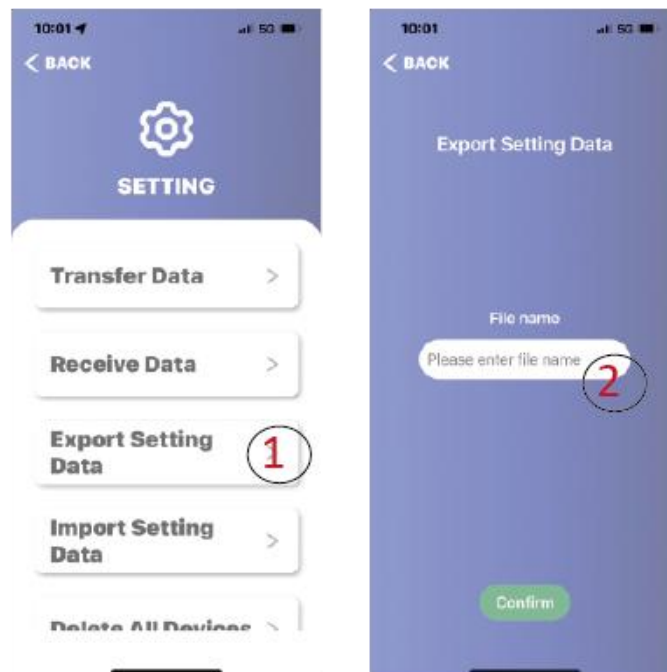
To remove the sensor from the system is similar to the procedures you remove controller. Press the trash can icon and follow the instructions to remove it.

Data Backup & Restore

One particular feature in HOZBee is its back-up and restore functions. Unlike other APP which needs you to register to get the back-up authorization, HOZBee allows you to back up your setting on your mobile device.

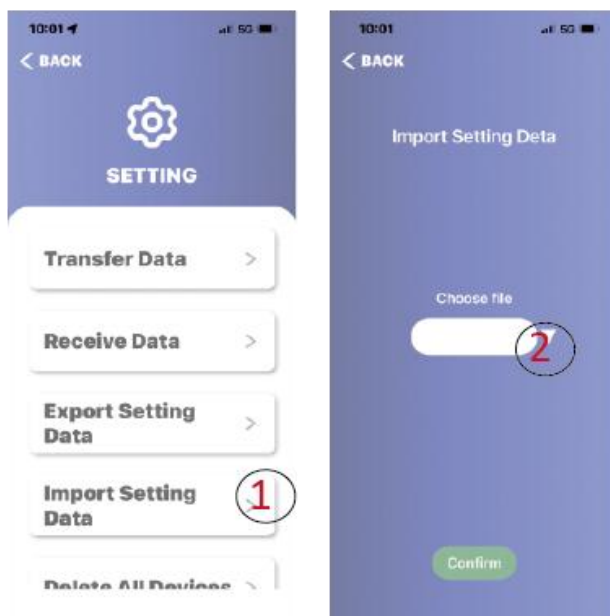
It's quite simple to back up your setting following the two steps:

1. Enter the setting page in installation mode, and select "Export Setting Data".
2. Input the file name that helps you to remark the project. There is no restrictions on the file name, but we suggest you using some recognized name that can help you to relate the project you have set up.



To restore the data, please take the following steps:

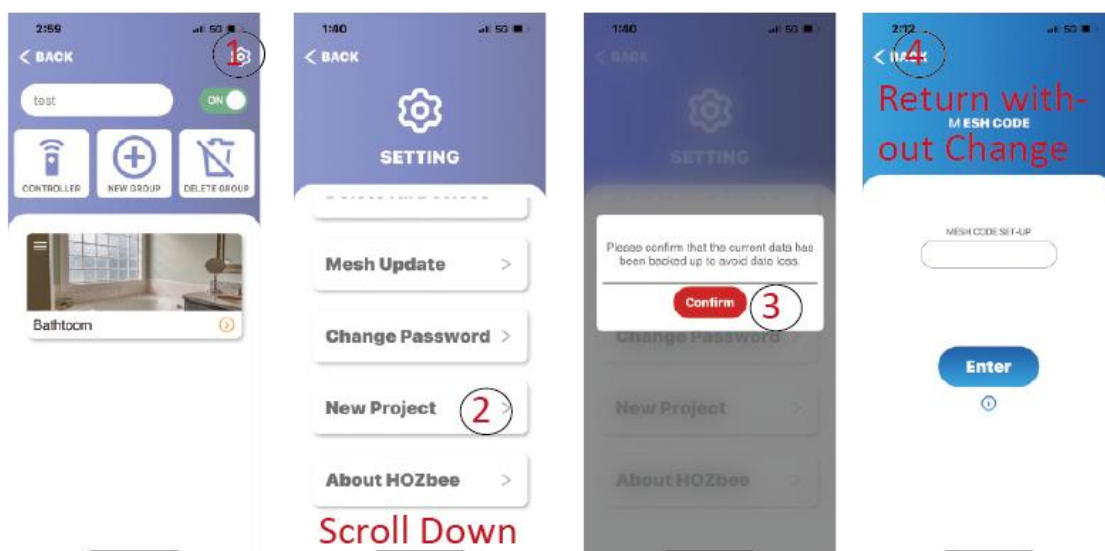
1. Enter the setting page in installation mode, and select "Import Setting Data".
2. Select the arrow and a list of the projects you restore will be shown. Select the project you want to restore and press confirm. You can switch to another project without changing you mobile device.



The function is particularly useful for installer to set up different projects on the same mobile device without connecting Internet.

New Project

If your occupation is an installer, you may need to set up many projects. HOZBee helps you to do so without switching your mobile. With HOZBee, your mobile becomes a work station for you to set up different project and can switch them freely on one mobile.



Once you select new project, HOZBee will require you to input a new Mesh Code , and your HOZBee will be reset to the status as you first download it and then you can start to create a new setting.

Other Commands

Mesh OTA: In order to provide better user experience, our software engineer always look for improvement of firmware or software coding. By this function, consumer or installer can upgrade the device firmware to use the most updated functions in BLTC smart lighting system.

Delete All Devices: If you want to reset your system but want to remove all devices quickly, you can use this button. Beware that all devices are in the status of power-on while you do this. Otherwise you may need to manual reset your device later and it takes longer time. We suggest you using this function once you are quite familiar with the operations of HOZBee.

About HOZBee: It shows the version of the current HOZBee on your mobile device. Usually the update of APP is not compulsory. However, we strongly suggest you update the APP version once it's available to avoid the problem while enjoying your smart lighting system.

Appendix: Tutorial video

USER SETUP: <https://youtu.be/L9PPpPG4QdE>

GROUP SETUP: https://youtu.be/o_b2Gbe9K0Y

SCENE SETUP: <https://youtu.be/Ucb4UFtBY2o>

DEVICE SETUP: <https://youtu.be/7PHRKbKjf40>